



**Sirena Olympus**

**Ref: 1816**



**Price:** € 115,000  
**Type:** Top Floor Apartment  
**Area:** 2km Coastal Belt

**Location:**  
**Covered Area:**  
**Uncovered Area:**

Paphos > Kato Paphos  
**Bedrooms:** 2  
**Bathrooms:** 2  
**Communal Fees:** € 600  
**Ref:** 1816





Sirena Olympia is a small boutique project of first class apartments built around a meandering communal pool. You enjoy an elevated position on the edge of the prestigious [Kato Paphos](#) seaside suburb. The project offers first class roomy apartments looking towards the expansive pool area.

Your apartment is in on the first floor, the top floor, and there is only one other apartment on your floor. From the entry to the apartment you will find a spacious living area with a wall of windows at the far end featuring an inviting large sunny balcony that enjoys fabulous views of the pool and the recreational area.

The kitchen is arranged at the slight angle to the living room, creating an unusually shaped area which features a fully fitted kitchen and an interesting and cosy dining 'room'.

The central corridor features two very spacious bedrooms with towering built-in wardrobes and elegant private en-suite bathrooms.

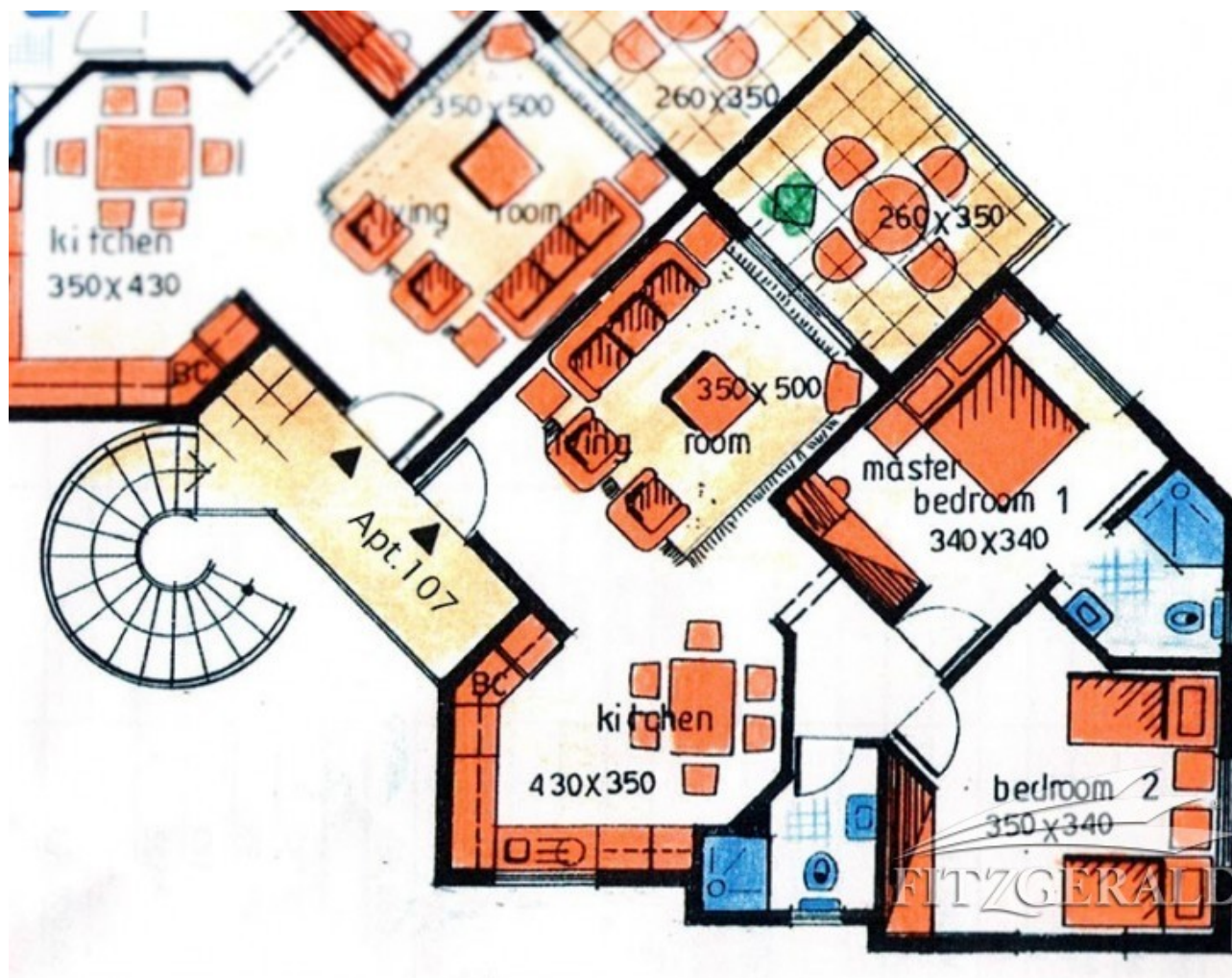
You may want to start your day with a leisurely swim and enjoy a healthy breakfast on your living room terrace that is literally a few steps away from the courtyard pool and makes for a perfect outdoor entertainment venue even in the height of summer. If you want a quick dip in the sea, some 2 km away, you are conveniently close to the Bus Route! This elegant apartment is close to the seaside Poseidonos Avenue which offers a vast number of shops, restaurants, entertainment venues and more. The Nearest restaurant and mini market is 700 m away.

You will be proud to own this urban chic midway between Paphos, the sea and UNESCO sites nearby. Great tourists haunts, coastline and beaches. Quick public transport 200 m away.

[See more properties in Kato Paphos](#)

- |                                 |                          |                     |
|---------------------------------|--------------------------|---------------------|
| ✓ Title Deeds                   | ✓ Dining - kitchen       | ✓ City Centre - 2km |
| ✓ Residential-Holiday           | ✓ Designer kitchen       | ✓ Airport - 8km     |
| ✓ Open balcony                  | ✓ Master with en-suite   | ✓ Build - 2004      |
| ✓ Central Courtyard             | ✓ Luxury bedrooms        |                     |
| ✓ Communal pool                 | ✓ Air condition          |                     |
| ✓ Childrens pool                | ✓ Ceiling Fans           |                     |
| ✓ Landscaped garden             | ✓ Fly screens            |                     |
| ✓ Designer lighting             | ✓ Sea - 2km              |                     |
| ✓ Quality fixtures and fittings | ✓ Paphos Harbour - 2.5km |                     |
| ✓ Luxury Living Room            | ✓ Restaurants - 700m     |                     |





We endeavour to make our sales particulars accurate and reliable, however, they do not constitute or form part of an offer or any contract and none is to be relied upon as statements of representation of fact. Any systems, services and appliances are not tested by us and no guaranteed as to their operating ability is given. All photographs, measurements, floor plans and distances referred to are given as a guide to prospective buyers only. Copyright of all details, photographs and floor plans remain exclusive to Mandziak Estates.